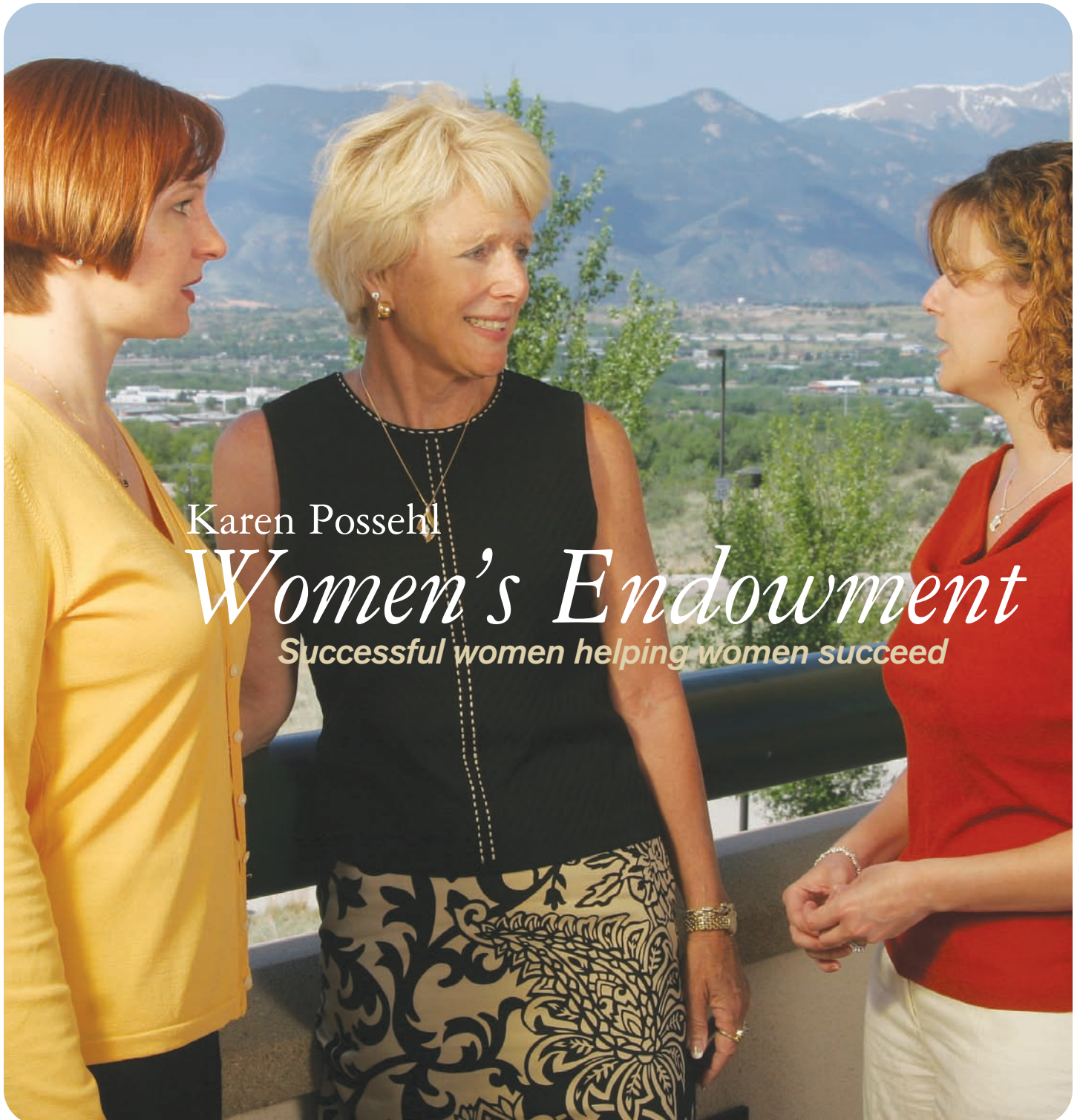


Creating Futures

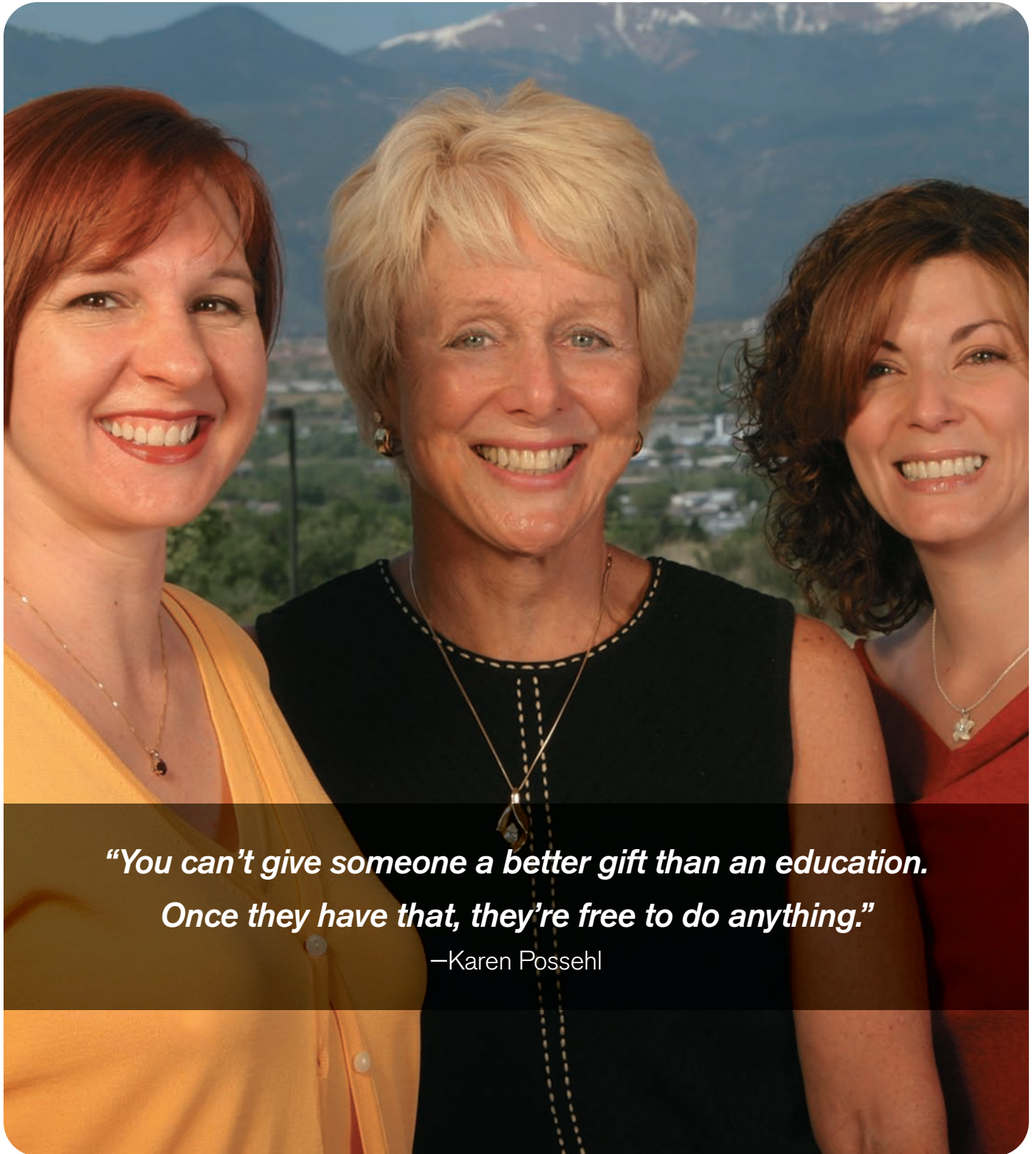
University of Colorado *at Colorado Springs*



Karen Possehl

Women's Endowment

Successful women helping women succeed



***“You can’t give someone a better gift than an education.
Once they have that, they’re free to do anything.”***

—Karen Possehl

Denver resident Karen Possehl made a commitment that forever changed the lives of many UCCS scholars. Pictured: Possehl (center) with scholarship recipients Wendi Clouse (left) and Ana Rosado (right).

The Karen Possehl Women's Endowment

The impact of the Karen Possehl Women's Endowment (KPWE) is best described in the words of those it serves. "This program was the helping hand when I needed it most," says Jan Grossberg, 2002 scholarship recipient. "It's been an emotional and financial lifeline. Just knowing I had people to talk to was enough to help me change my life."

Many talented women in our community have faced significant challenges in their quest of an education. KPWE scholarships give these women the tools they need to conquer the obstacles they face.

The scholarships do offer critical monetary support, but this is only the beginning. Strong community mentorships, caring emotional resources, peer counseling, and childcare options are woven into each scholarship, giving women the freedom to concentrate on their education. The results are impressive—graduation with honors is the norm.

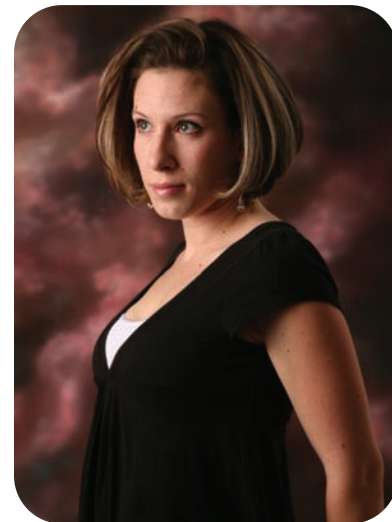
Harnessing the Power of a Community

In 1998, Karen Possehl was approached with an innovative proposal for an endowed scholarship to advance women's education. Although Karen and her family are Denver residents, they recognized UCCS's unique need for this support. Karen was so impressed with the project that she took it on personally. Since she and her husband, Jim, made their generous initial gift in 1998, the community has adopted the program as its own. Many community members have stepped forward offering to be mentors or to contribute to the endowment. The result: changed lives for more deserving women with every passing year.



Unstoppable Women!

KPWE is a special scholarship program that delivers powerful results.



Desiree Mendes

—*The Power of Perseverance*

Growing up in a single-parent household taught Desiree early on that she would have to work harder than most to succeed. A student of extraordinary promise, Desiree graduated from high school a semester early with a 3.98 GPA and started college at UCCS at just 17 years old. But living on her own while going to school and working full time to pay for college proved too much, so Desiree turned to the Air Force. During this successful chapter in her life, Desiree never gave up on her lifelong desire for a college degree.

A KPWE scholarship and support network made it possible for Desiree, now a single mother, to return to college. Today she is pursuing her undergraduate studies in chemistry, with plans to further her education with a master of science degree before applying to medical school, where she hopes to study radiology or nuclear medicine.

To learn about the many ways you can make a gift:

Contact

Jaime McMullen Garcia

Associate Director of Development

1420 Austin Bluffs Parkway
Colorado Springs, CO 80918-3733
719-255-5105
jaime.garcia@cufund.org

**“Because these women
believed in me,
I knew I could believe
in myself.”**

—KPWE Scholar



UNIVERSITY OF COLORADO
AT COLORADO SPRINGS



Caring connections with accomplished women is a hallmark of the KPWE program. Mentor Rosanne Gain (left) with scholar Rachele Ramirez Dworschak.

scholars much more than a check in the mail. Many of these women return to school needing a boost in self-esteem and confidence. KPWE mentors unlock the inherent strength and capabilities of these women by showing faith and sharing inspirational experiences of triumph. They are both sounding boards and wise counselors for the scholars. The mentorship piece of the KPWE is key to its success, and your support will expand its scope.

Comprehensive Support for the Nontraditional Returning Student

It was 1992 when university women decided to serve a population of battered and abused women. These were women of tremendous talent and potential, hamstrung by what seemed to be insurmountable challenges. Some of these women moved directly from a safehouse to the classroom at the outset of the program.

The extraordinary promise and success of this original class of scholars compelled Karen Possehl to get involved personally. Since then the program's founders have expanded their mission, which now includes serving single mothers, those with physical challenges, and those with issues unique to a generation who are caretakers for both children and aging parents.

The needs of a nontraditional returning student are typically more complex than those of the new high school graduate.

That's why the program provides its

Now is the Time

Your gift, coupled with community support, will help us honor Karen Possehl's dedication to those in need. It will also enable even more deserving scholars to reach their educational goals and become vital and successful community citizens. Please join us in ensuring the continued success of the Karen Possehl Women's Endowment and the unstoppable women it supports.